

FIGURE 14  
RUSHCUTTERS BAY  
HAZARD CATEGORIES  
5% AEP EVENT

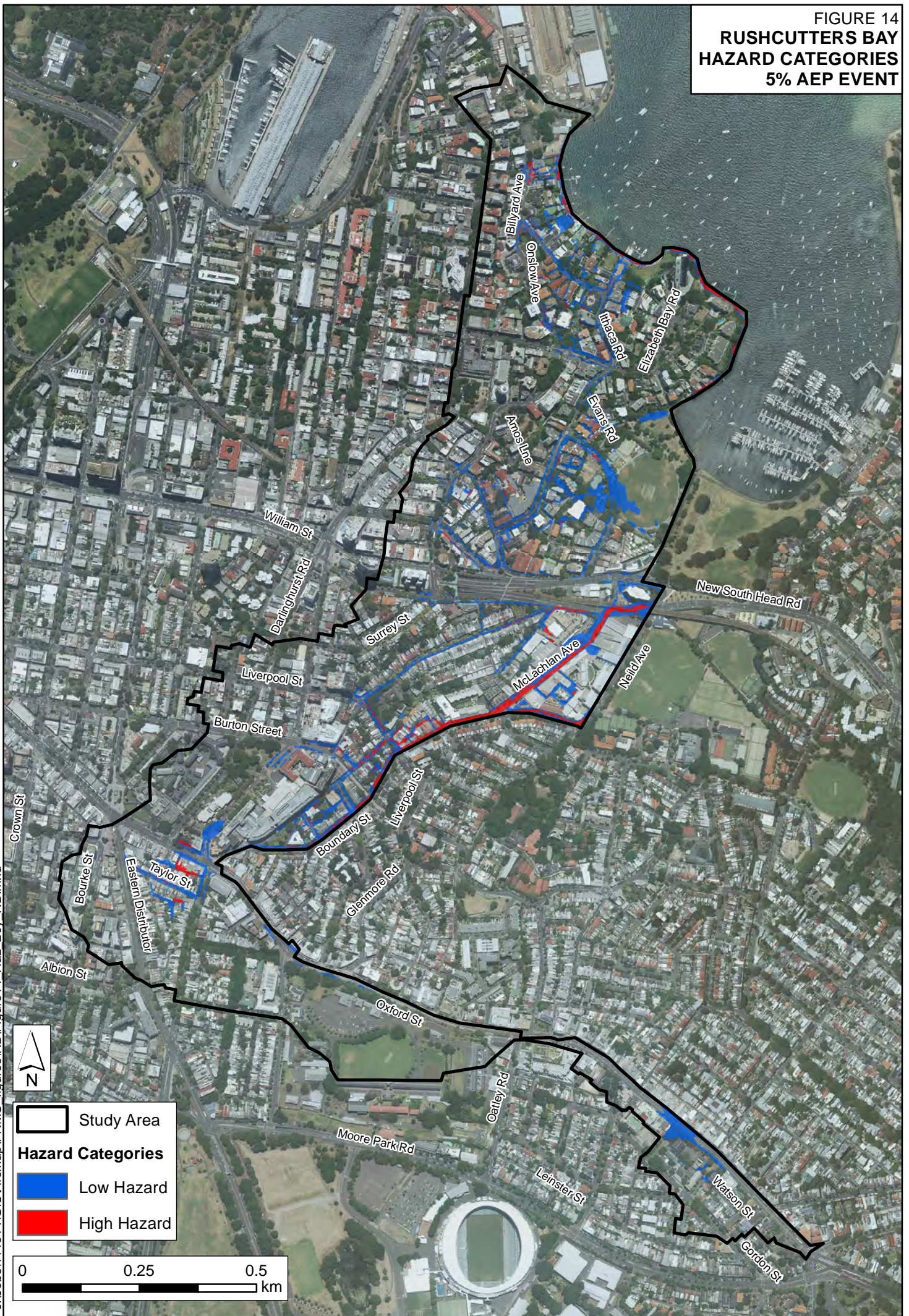
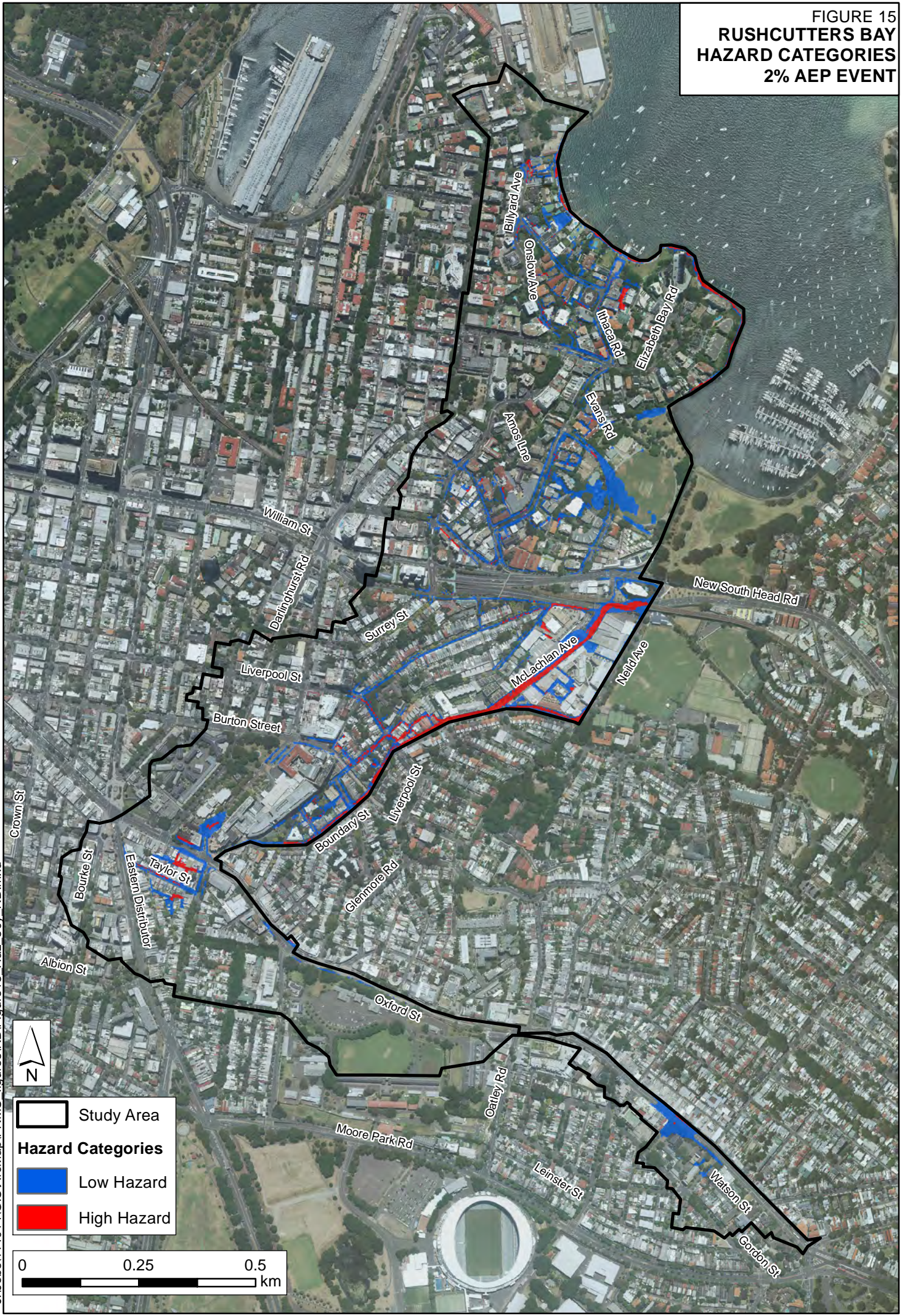


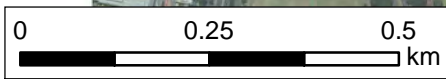
FIGURE 15  
**RUSHCUTTERS BAY**  
**HAZARD CATEGORIES**  
**2% AEP EVENT**



**Study Area**

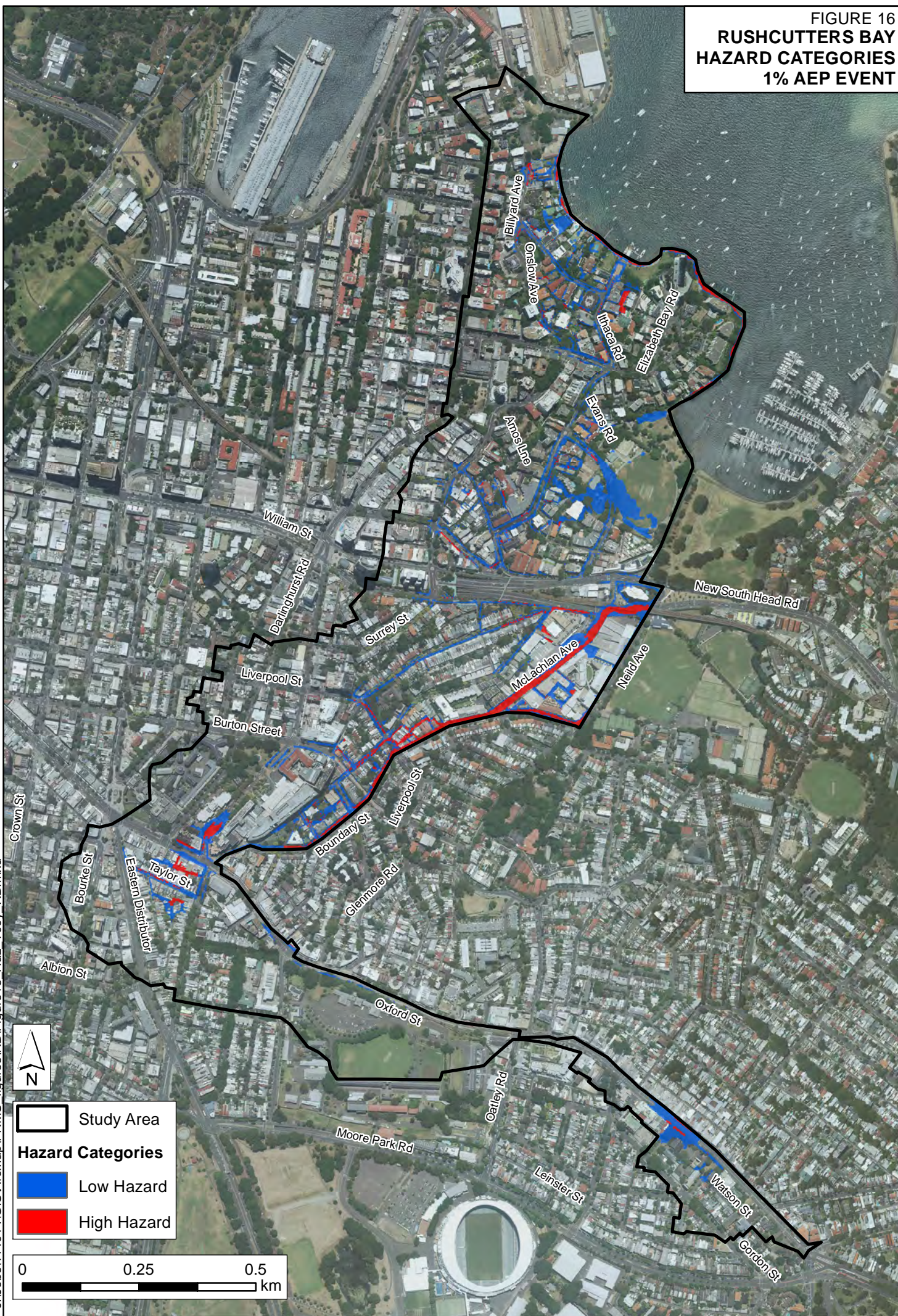
**Hazard Categories**

- Low Hazard
- High Hazard



J:\Jobs\114014\GIS\ArcMap\FRMS\_figures\RB\Figure15\_Haz\_50y\_RB.mxd

FIGURE 16  
**RUSHCUTTERS BAY**  
**HAZARD CATEGORIES**  
**1% AEP EVENT**



**Study Area**

**Hazard Categories**

- Low Hazard
- High Hazard

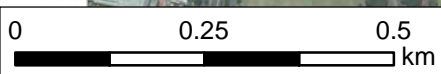
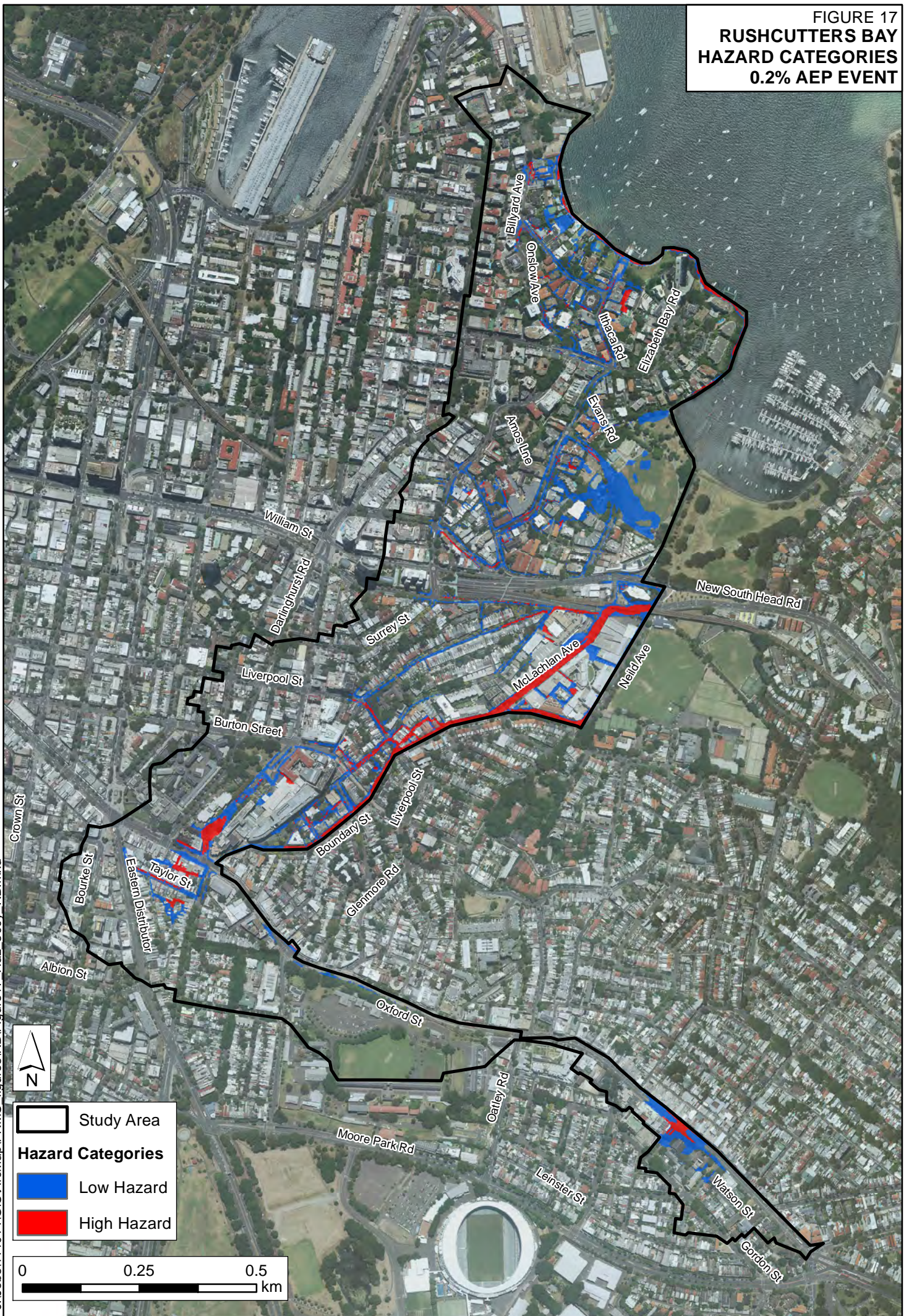


FIGURE 17  
**RUSHCUTTERS BAY**  
**HAZARD CATEGORIES**  
**0.2% AEP EVENT**



J:\Jobs\114014\GIS\ArcMap\FRMS figures\RB\Figure17\_Haz\_500y\_RB.mxd



**Study Area**

**Hazard Categories**

- Low Hazard
- High Hazard

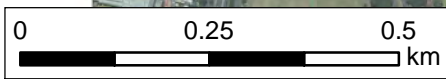
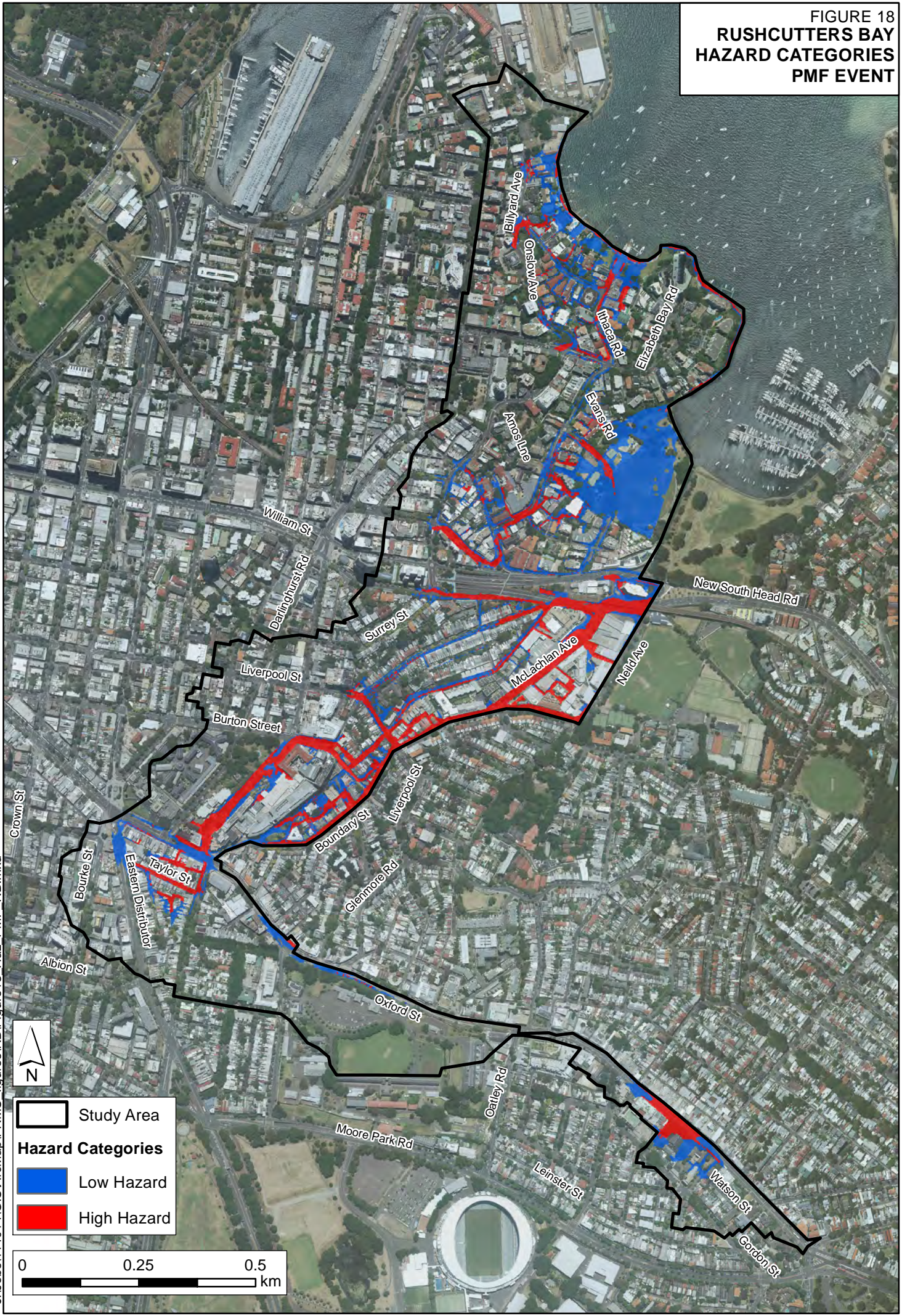


FIGURE 18  
**RUSHCUTTERS BAY**  
**HAZARD CATEGORIES**  
**PMF EVENT**



J:\Jobs\114014\GIS\ArcMap\FRMS\_figures\RB\Figure18\_Haz\_PMF\_RB.mxd

# RUSHCUTTERS BAY DURATION OF INUNDATION 1% AEP EVENT

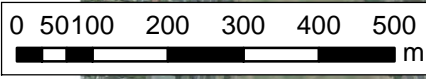
Note: Durations shown on this figure are for a 1% AEP design event duration of 1 hour. Duration of inundation will vary with other event durations.



**Study Area**

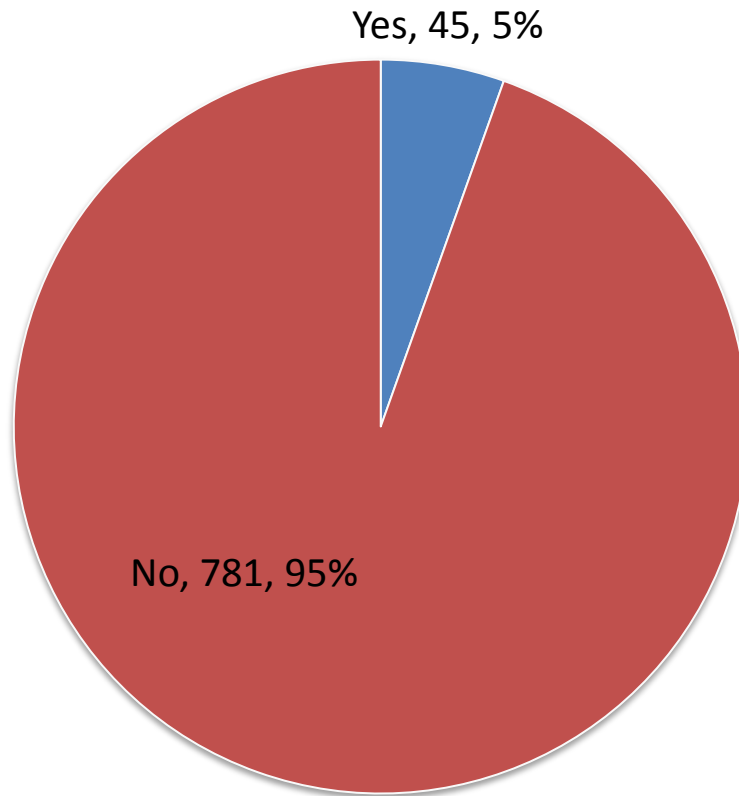
**Duration for which depth is > 0.3m**

- Not inundated above 0.3m
- < 15 mins
- 15 mins - 30 mins
- 30 mins - 1 hour
- 1 hour - 2 hours
- > 2 hours

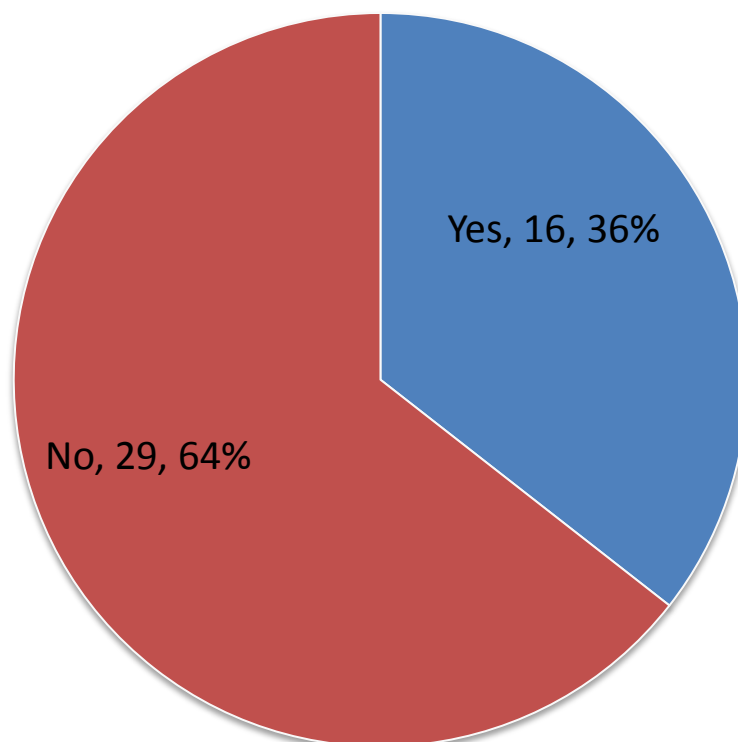


J:\Jobs\114014\GIS\ArcMap\FRMS\_figures\RB\Figure19\_RB\_duration.mxd

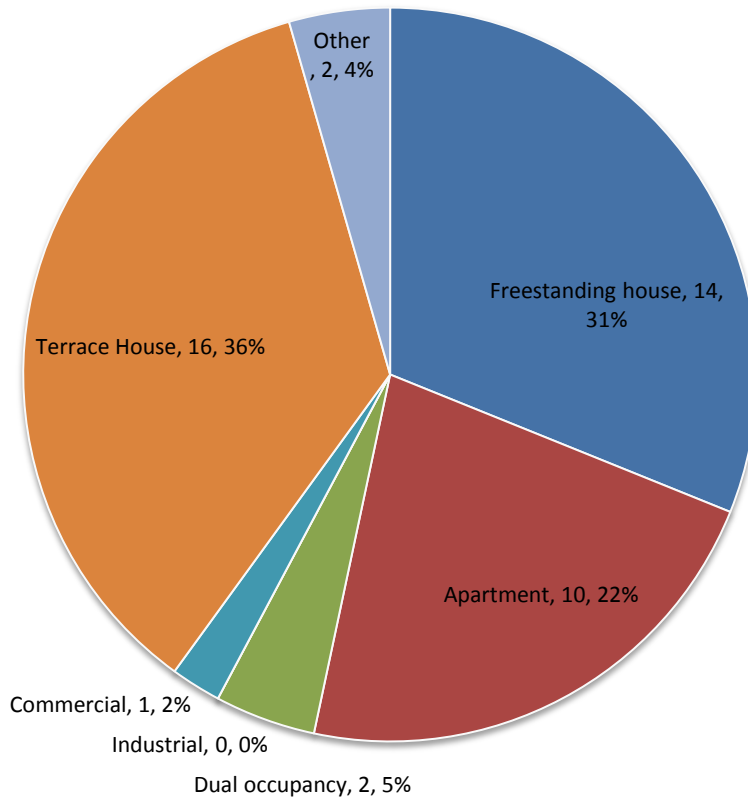
### A: Number of Respondents



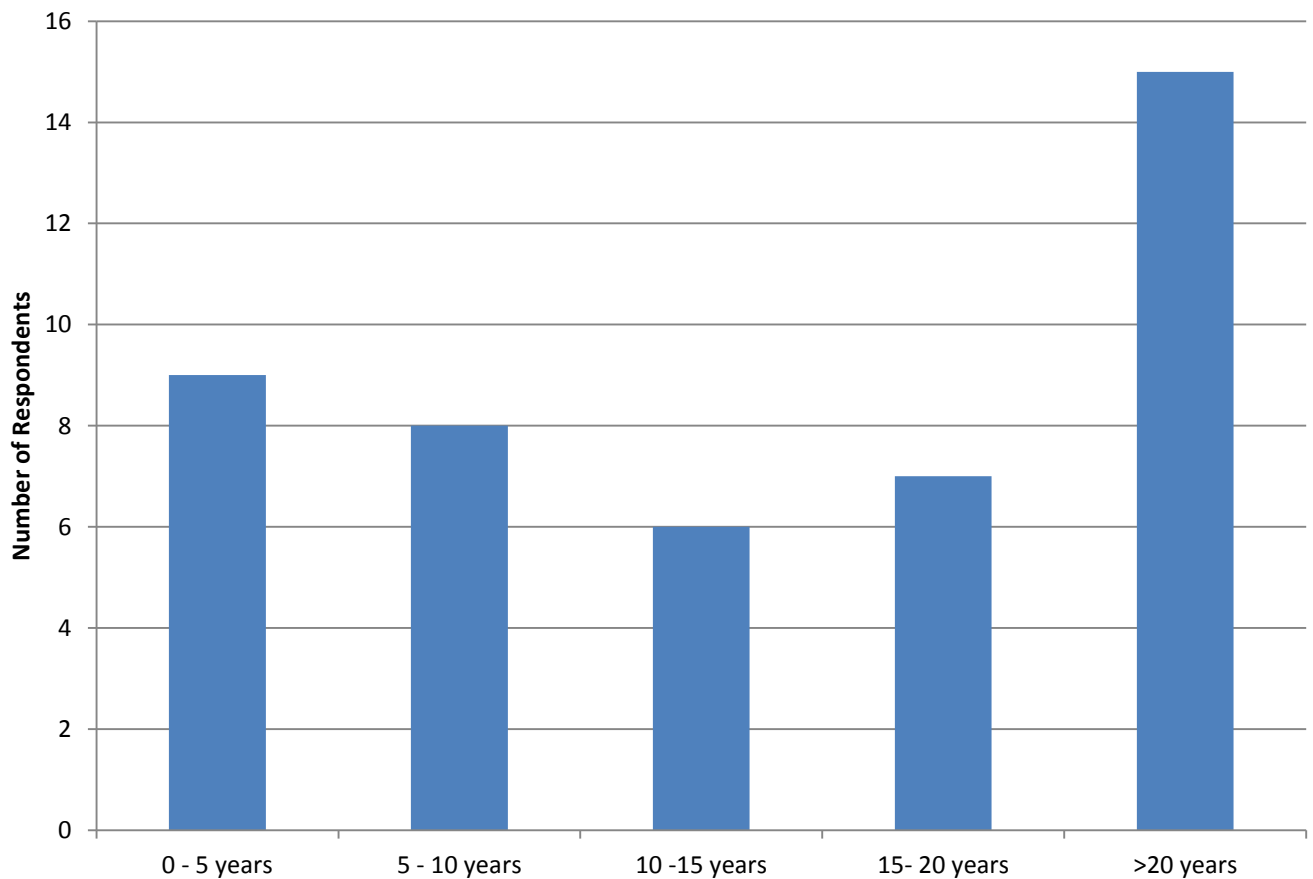
### B: Experienced Flooding



### C: Property Type

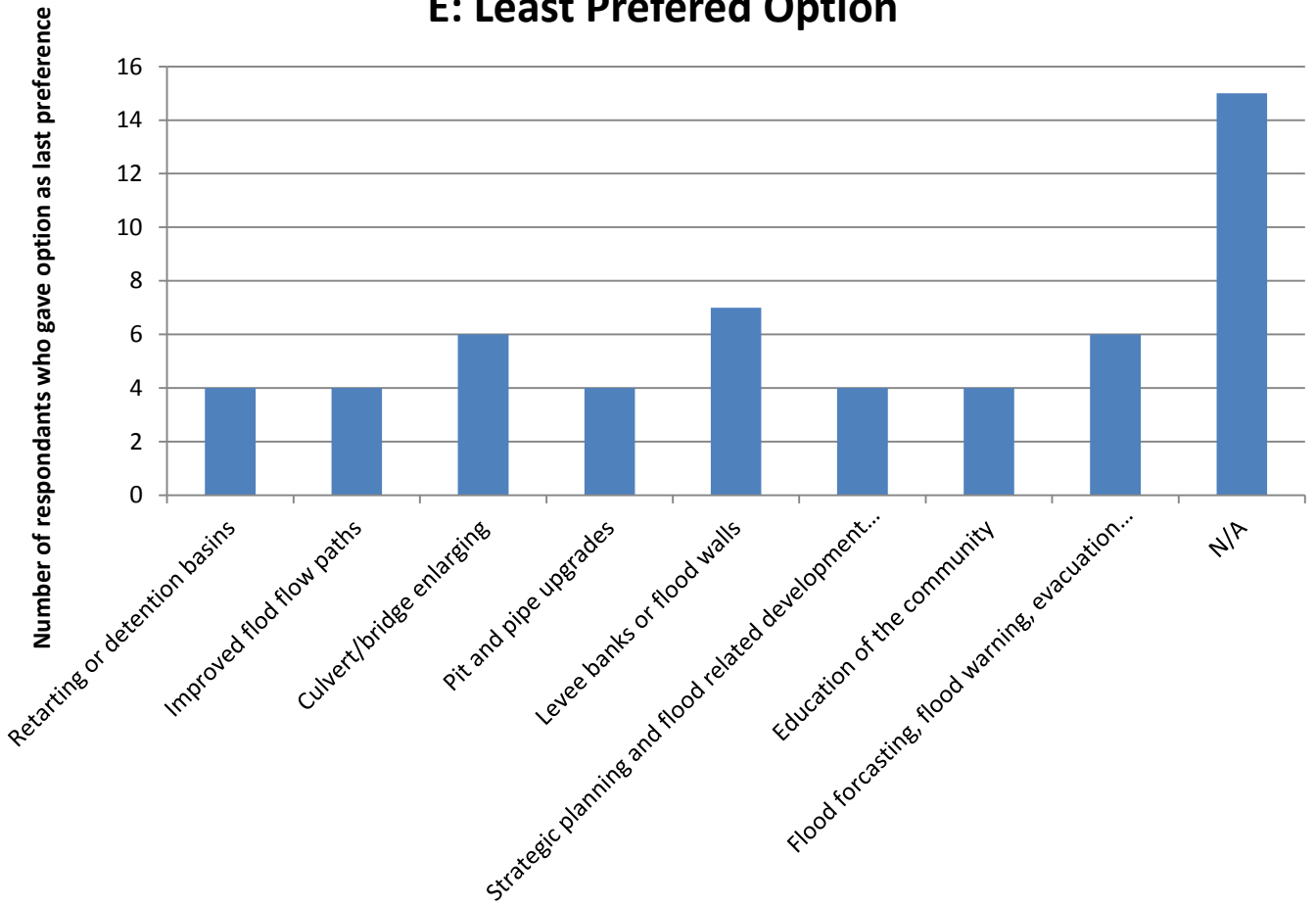


### D: Period of Living/Working/Owning Property

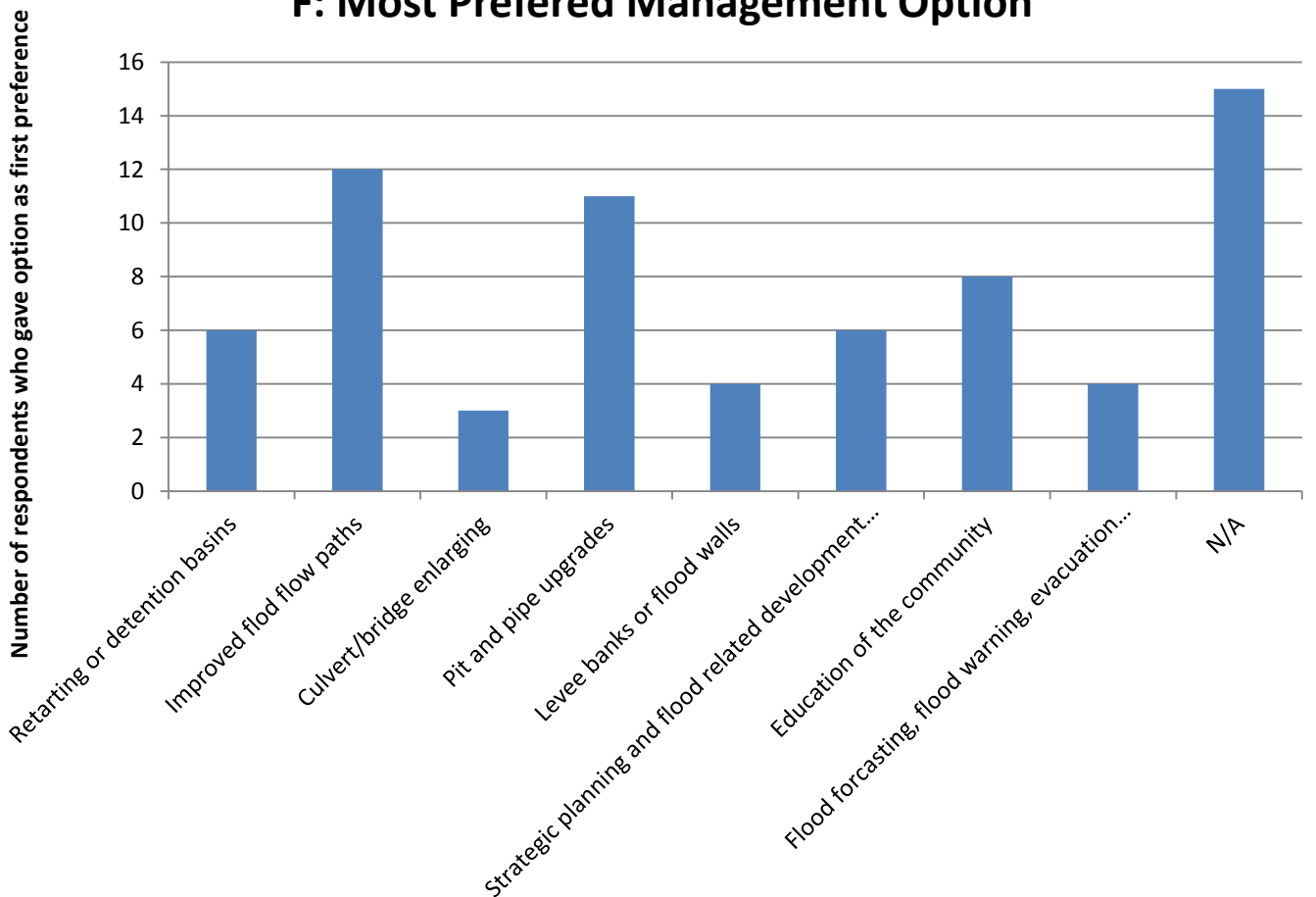




**E: Least Preferred Option**



**F: Most Preferred Management Option**



### G: Location of Flooding Experienced

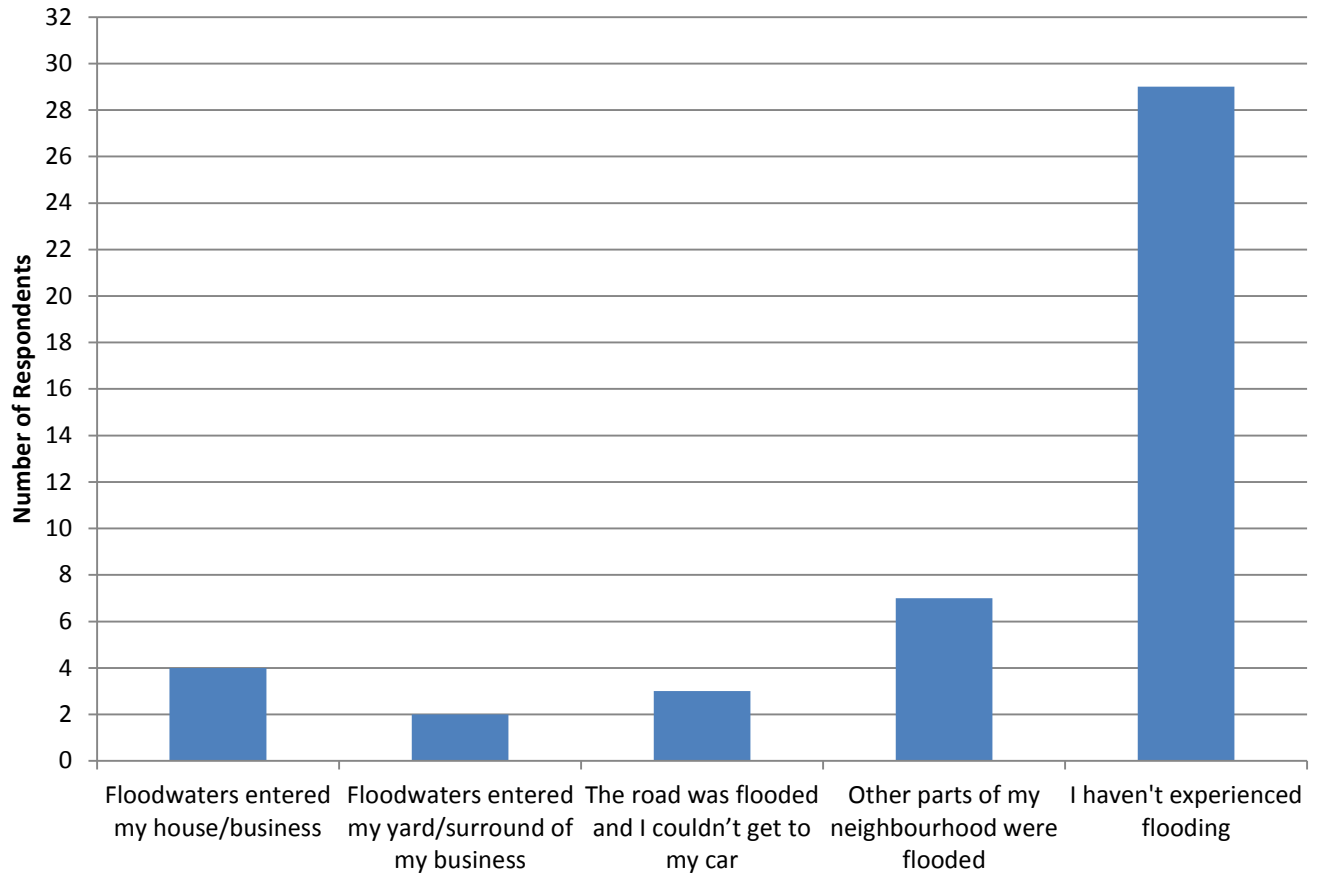


FIGURE 21  
RUSHCUTTERS BAY  
OVER FLOOR FLOOD LIABILITY

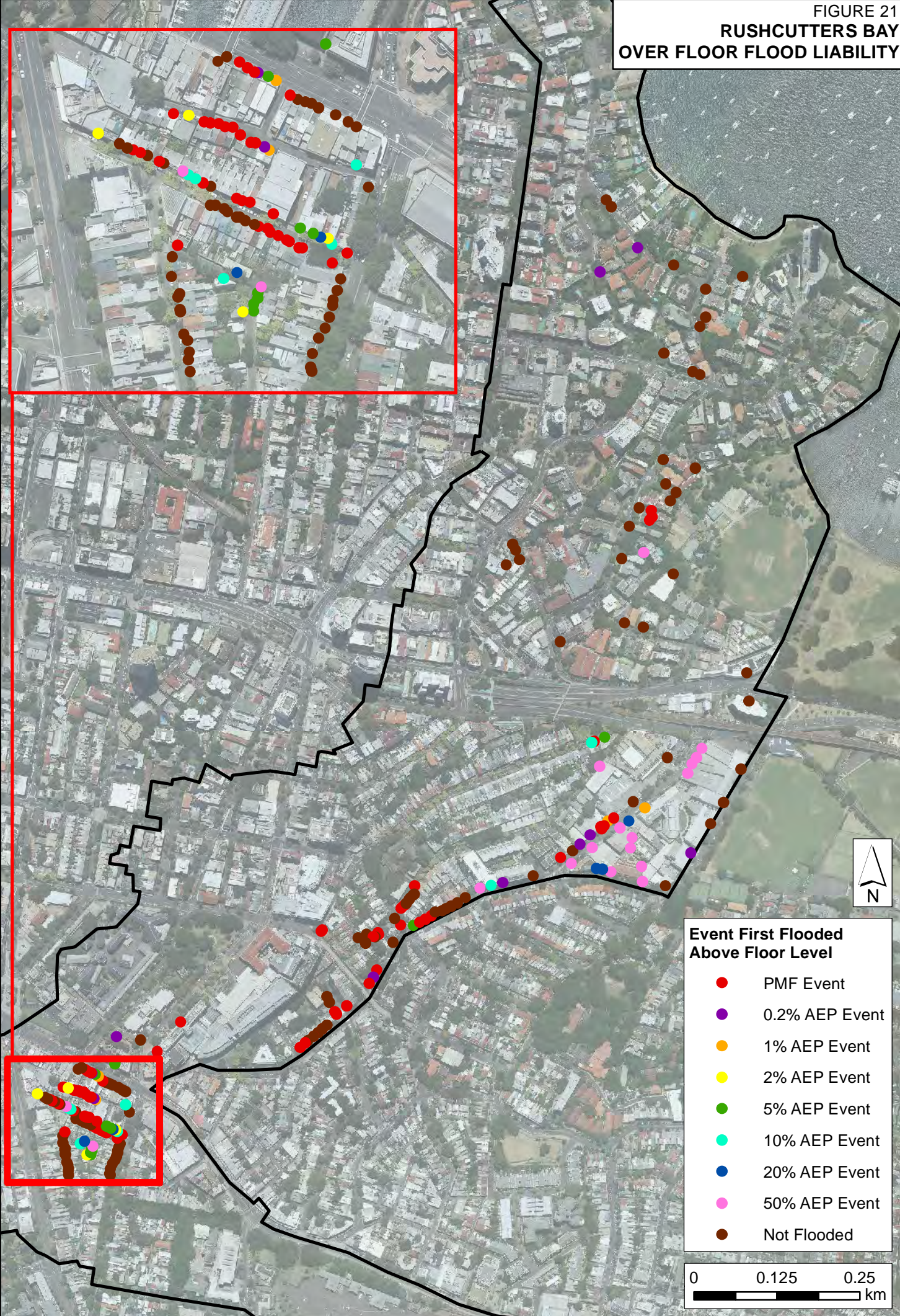
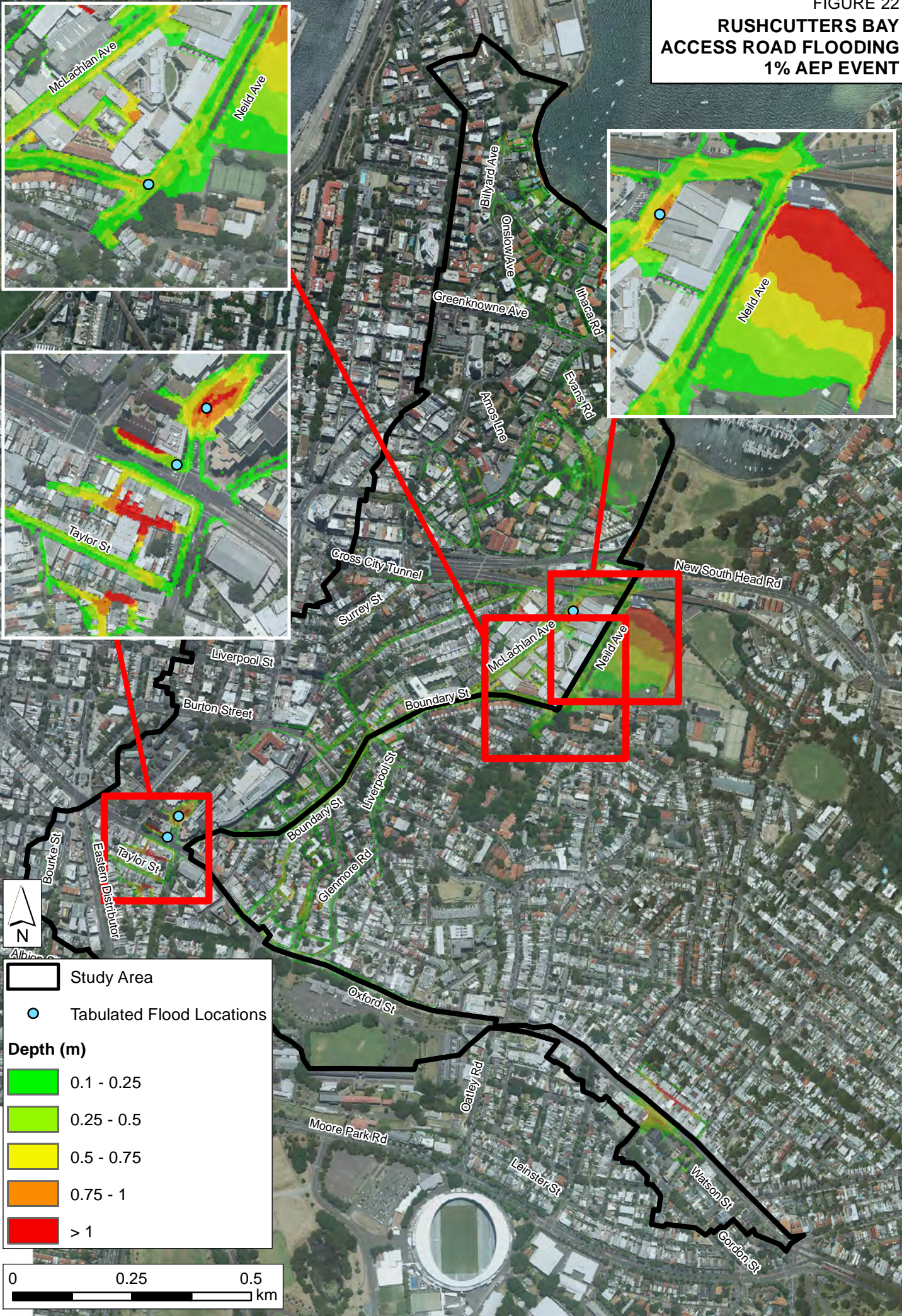


FIGURE 22  
**RUSHCUTTERS BAY  
 ACCESS ROAD FLOODING  
 1% AEP EVENT**



J:\Jobs\114014\GIS\ArcMap\FRMS\_figures\RB\Figure22\_Access\_Road\_Flooding\_RB.mxd

Study Area  
● Tabulated Flood Locations

**Depth (m)**

	0.1 - 0.25
	0.25 - 0.5
	0.5 - 0.75
	0.75 - 1
	> 1

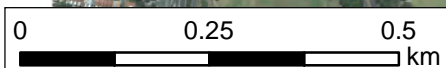


FIGURE 23  
**RUSHCUTTERS BAY  
 FLOOD RISK MITIGATION  
 MANAGEMENT OPTIONS**

**FM-RB05: Drainage Upgrade**  
 - Upgrade capacity of drainage pipes on Victoria Street



**FM-RB02: Drainage Upgrade**  
 - Upgrade capacity of trunk drainage along Boundary Street and Neil Avenue, outlet into Weigall Sportsground

**FM-RB01: Drainage Upgrade**  
 - Upgrade capacity of trunk drainage along Boundary Street, Neild Avenue and McLachlan Avenue

**FM-RB04: Drainage Upgrade**  
 - Upgrade capacity of trunk drainage from Taylor Street to Neild Avenue, outlet into Weigall Sportsground

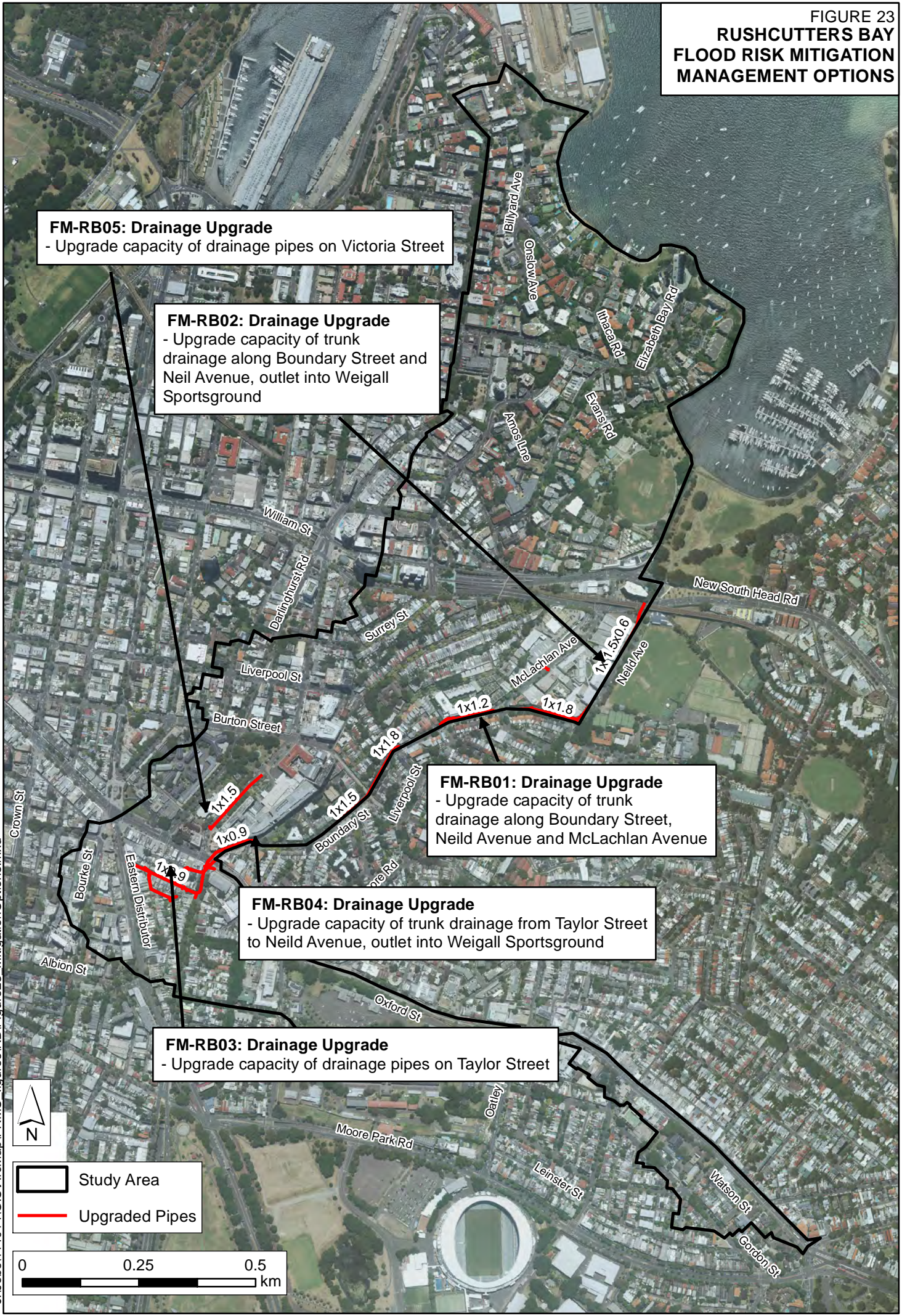
**FM-RB03: Drainage Upgrade**  
 - Upgrade capacity of drainage pipes on Taylor Street



 Study Area  
 Upgraded Pipes

0      0.25      0.5  
 km

J:\Jobs\114014\GIS\ArcMap\FRMS\_figures\RB\Figure23\_MitigationOptions.mxd



**FIGURE 24**  
**BOUNDARY STREET HOTSPOT**  
**1% AEP EVENT**

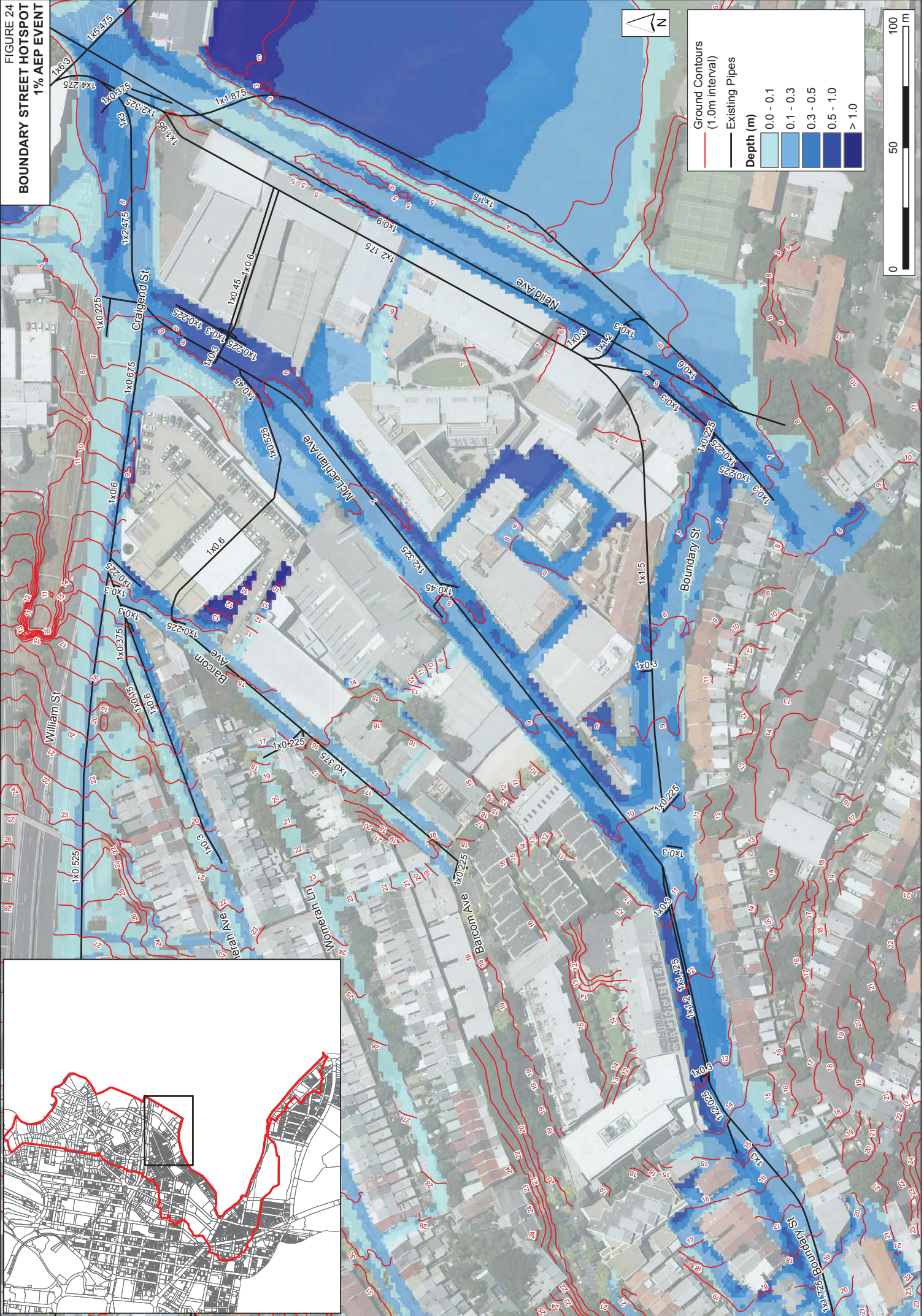


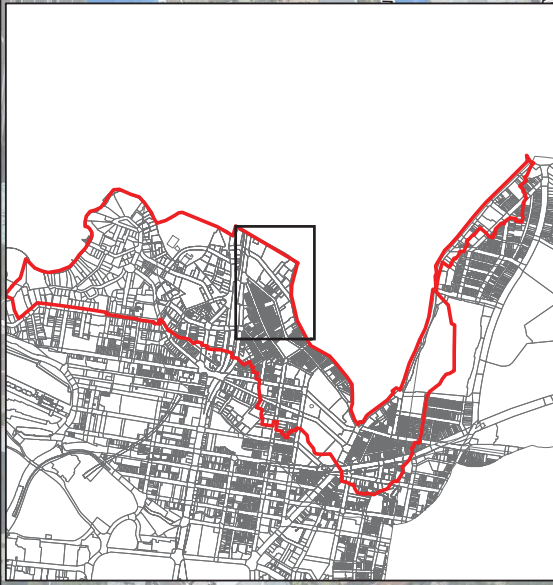
FIGURE 25  
 OPTION FM - RB01  
 10% AEP EVENT FLOOD IMPACT



FIGURE 26  
 OPTION FM - RB01  
 10% AEP EVENT HAZARD IMPACT



- Event First Flooded Above Floor Level**
- PMF Event
  - 0.2% AEP Event
  - 1% AEP Event
  - 2% AEP Event
  - 5% AEP Event
  - 10% AEP Event
  - 20% AEP Event
  - 50% AEP Event
  - Not Flooded
  - No Longer Flooded Above Floor Level in 10% AEP
- Upgraded Pipes**
- Newly High Hazard (Prev. Low Hazard)
  - Low Hazard (Unchanged)
  - High Hazard (Unchanged)
  - Newly Low Hazard (Prev. High Hazard)





**FIGURE 27**  
**OPTION FM - RB02**  
**10% AEP EVENT FLOOD IMPACT**



**Event First Flooded Above Floor Level**

- PMF Event
- 0.2% AEP Event
- 1% AEP Event
- 2% AEP Event
- 5% AEP Event
- 10% AEP Event
- 20% AEP Event
- 50% AEP Event
- Not Flooded
- No Longer Flooded Above Floor Level in 10% AEO

**Upgraded Pipes**

**Impact (m)**

Red	-0.42 - -0.3
Orange	-0.3 - -0.2
Yellow	-0.2 - -0.1
Light Green	-0.1 - -0.05
White	-0.05 - -0.01
Light Blue	0.01 - 0.05
Medium Blue	0.05 - 0.1
Dark Blue	0.1 - 0.2
Very Dark Blue	0.2 - 0.36
Black	No Longer Flooded
Green	Newly Flooded

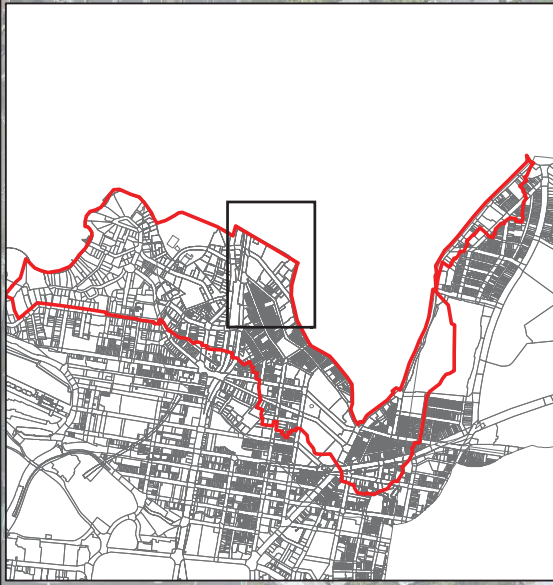


FIGURE 28  
 OPTION FM - RB02  
 10% AEP EVENT HAZARD IMPACT



- Event First Flooded Above Floor Level**
- PMF Event
  - 0.2% AEP
  - 1% AEP
  - 2% AEP
  - 5% AEP
  - 10% AEP
  - 20% AEP
  - 50% AEP
  - Not Flooded
  - No Longer Flooded Above Floor Level in 10% AEP
- Upgraded Pipes**
- Newly High Hazard (Prev. Low Hazard)
  - Low Hazard (Unchanged)
  - High Hazard (Unchanged)
  - Newly Low Hazard (Prev. High Hazard)